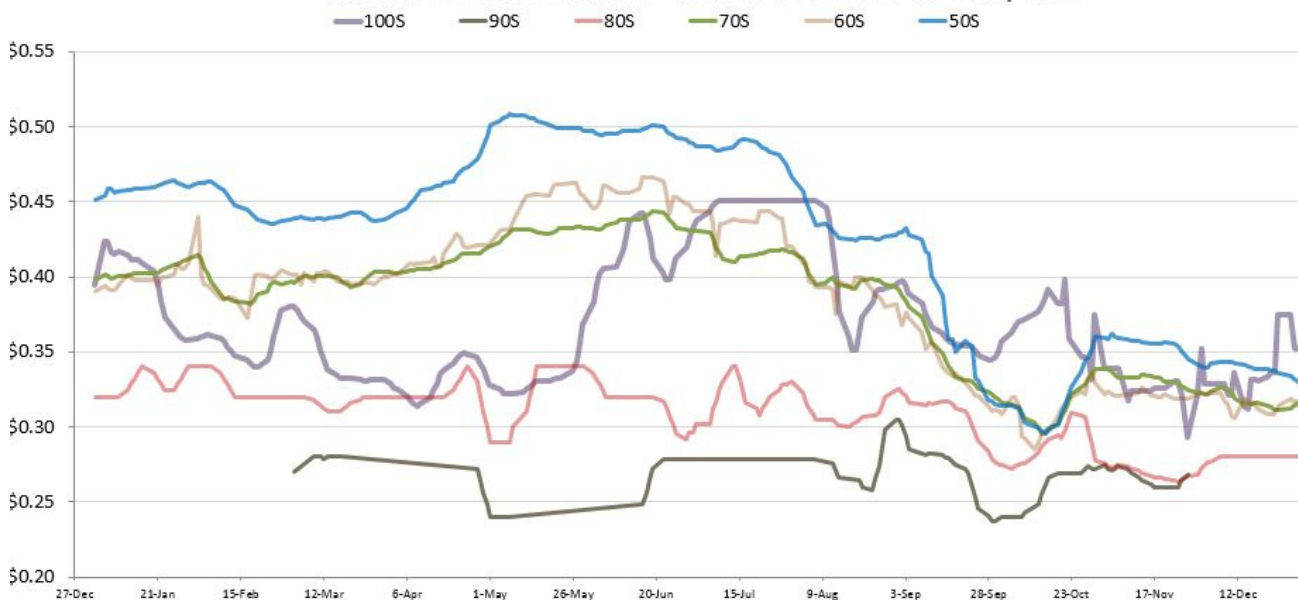


## Vegetable Market Variance & Volatility

### AGCHEQ - 2015 NYC Russet Potato Sizes

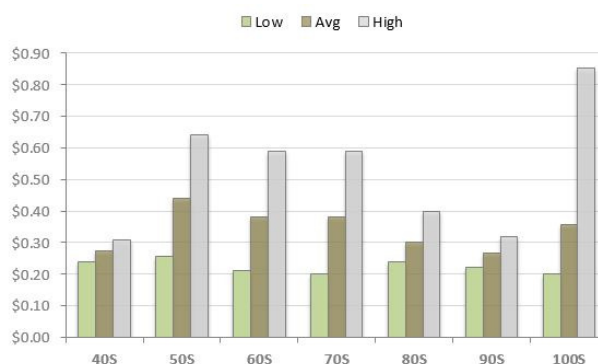
- AGCHEQ NYC Russet Potato Index Prices per Pound varied dramatically & inconsistently according to size
- 70s were average 19.4% more expensive than 80s (\$0.07409). Maximum premium was May 7, +37.0%
- 50s were average 9.17% more expensive than 60s (\$0.039). Maximum premium was May 1, 20.4%
- However, 100s were average 20.2% more expensive than 80s with a maximum premium of 86.4%
- However, nearly no spread existed between 60s and 70s, only an average of 0.84%.

Russet Potatoes Market - NYC Wholesale Prices by Size



## AGCHEQ NYC Russet Size Indexes

	Low	Avg	High
40S	\$ 0.240	\$ 0.274	\$ 0.310
50S	\$ 0.255	\$ 0.440	\$ 0.640
60S	\$ 0.210	\$ 0.382	\$ 0.590
70S	\$ 0.200	\$ 0.381	\$ 0.590
80S	\$ 0.240	\$ 0.302	\$ 0.400
90S	\$ 0.220	\$ 0.266	\$ 0.320
100S	\$ 0.200	\$ 0.356	\$ 0.854



## About AGCHEQ Custom Solutions

AGCHEQ offers custom solutions to profitably manage risk:  
Accurate food market transparency, analysis and neural network forecasting.

**FOR MORE INFORMATION** [Connect@AGCHEQ.com](mailto:Connect@AGCHEQ.com)